

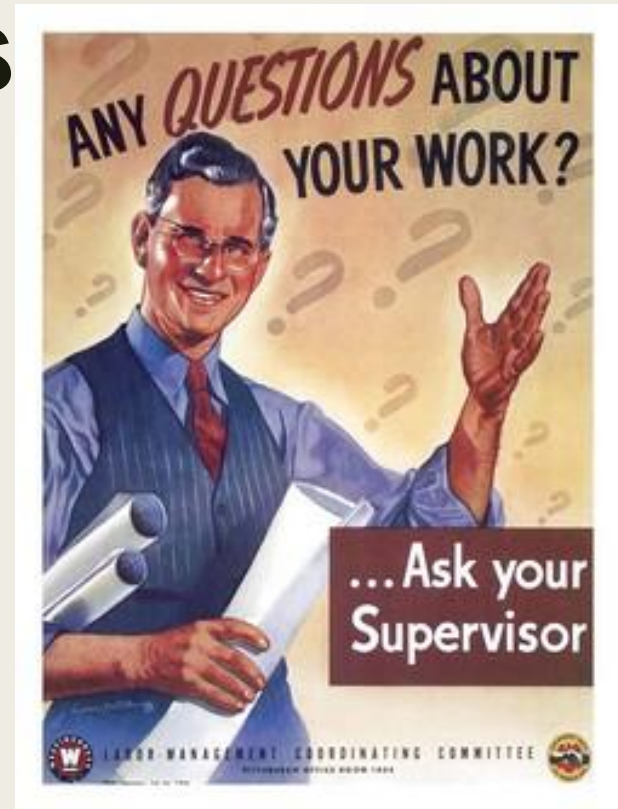
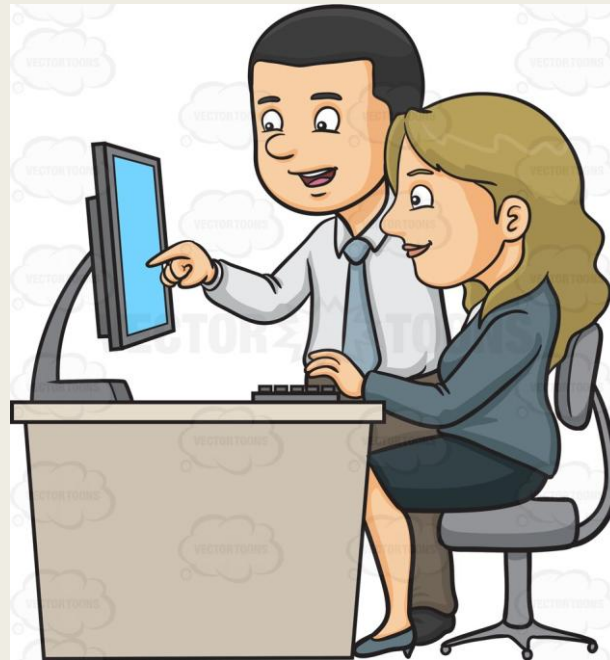


INTRODUCTION TO OCCUPATIONAL SAFETY

JINR
2017



**Most important:
to listen to your supervisor and
follow their instructions**



FIRE SAFETY

- Most flammable objects: buildings and constructions associated with the permanent performance of the fire hazard operations (storage and maintenance of compressed gas cylinders, integrated cable system, oil-filled equipment, computer centres, etc.)
- Fire safety – security of people, property, society from fire.
- Fire safety requirements – special conditions of social and/or technical character established by the legislation of the Russian Federation with the purpose to ensure fire safety.

JINR EMPLOYEES AND GUESTS ARE LIABLE:

- To comply with the fire safety requirements;
- To take precautions when using fire hazard materials, substances and equipment;
- In the event of a fire outbreak to immediately call the fire brigade at the phone numbers **112, 01 or 216-45-01** and, without waiting for their arrival, to start firefighting using the fire extinguishing equipment provided there is no threat to human life.

JINR EMPLOYEES AND GUESTS ARE LIABLE:

- to know the location of primary fire extinguishing equipment and means of fire communication in order to use them in accordance with their intended purpose;
- to maintain operating conditions of appliances, central heating, ventilation, electrical equipment, and electrical installations, and to take measures on elimination of detected failures and disorders;
- to sweep and clean workplaces and working areas before the end of the working time; to cut off power supply, the light, electric equipment and personal computers upon the end of the working time; to close vent panes, doors and windows;

It is forbidden:

- to use defected appliances, electrical wires and cables with visible insulation failure; to use damaged sockets, circuit breakers, and other



It is forbidden:

- to damage wiring system: seal with paper, wallpaper, cloth, to break insulation, to cover sockets with posters or fix them on wirework, to wrap the bulbs and light fixtures with paper, cloth or other flammable materials, as well as to use lamps without caps required by the lamp design;

In case of fire:

- immediately call at phone numbers 112, or 01, or 216-45-01 at the Fire Department and report the start of fire (it shall be necessary to give the address of fire location, the exact place of fire breakout, and the name of a calling person);
- to immediately inform the people, the head of a structural unit or his/her deputy about the fire;
- to leave the building in accordance with evacuation plan (it shall be strictly forbidden to use the elevator), to remain calm and organized, to cover mouth and nose with a damp cloth in order to protect respiratory system from the products of combustion;

In case of fire:

- if possible, to take appropriate measures to evacuate people, to cut off power supply, to start fire fighting using the primary means of fire extinguishing;
- when it is required, try to render first aid to fire victims.

GENERAL RULES

- You should follow traffic rules when walking and riding a bicycle;
- It is strictly recommended to walk in the operating facilities and production buildings only down the fixed passages, pedestrian bridges and sites. It is not allowed to go upstairs and downstairs several steps at a time and run down the stairs and pedestrian bridges;
- You should perform only the work assigned to you by your immediate supervisor;
- You are obliged to keep in good repair the machine-tools, equipment, implements and other hardware issued to you to use at work and to take proper care of them. The employees are bound to use the issued equipment for the purpose intended.

It is forbidden

- to smoke at workplaces and on the territory of the Institute, except for the places specially designated and equipped for the purpose
- to have meals at workplaces;
- to use the equipment, devices and implements for personal advantage;
- to switch on and off the equipment, conveying facilities and load-lifting machines, which are not involved in the assigned work;
- to independently repair electric equipment, electric instruments, to replace electric lamp-bulbs, to clean and repair light fixtures









THANK YOU
FOR
your
ATTENTION!
ANY QUESTIONS?