

LABOUR SAFETY
REGULATION
COURSE



UC JINR, 2018

CONTENTS

- General safety requirements
- Safety specification before starting work
- Safety specification during the work
- Safety specification in an emergency
- Safety specification at the end of the work
- Safety signs

General safety requirements

Follow requirements, specified by:

- technological process
- equipment operating rules
- instructions given by your supervisor

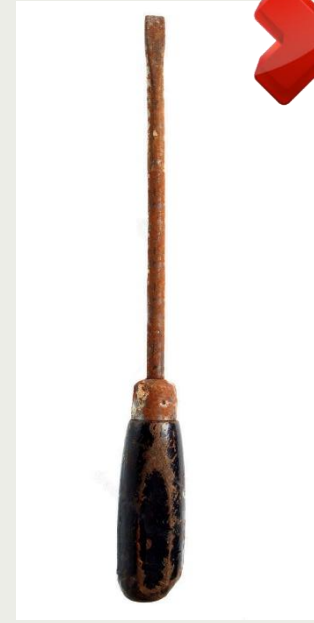


General safety requirements

Use the provided uniform
(boot covers, coat, cap)

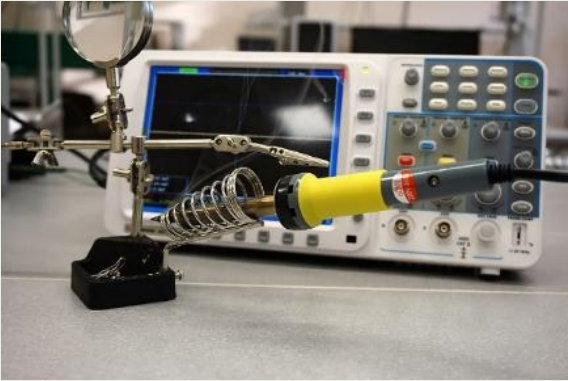


Work only with proper tools



General safety requirements

YOU SHOULD ALWAYS REMEMBER OF
THE INFLUENCE OF
harmful and dangerous factors!



Hot elements



Sharp corners and tools



Electrical current



Ionizing radiation sources



Inflammable materials

Safety specification before starting work



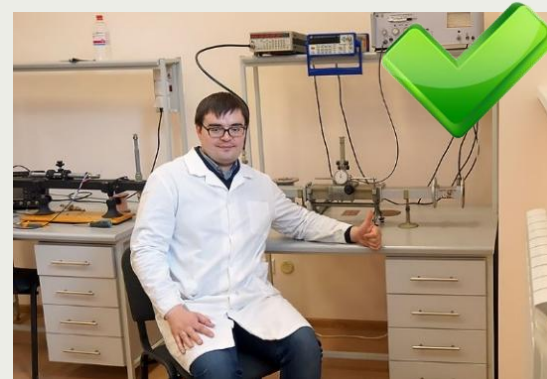
1. **Get the task** from your supervisor.
2. **Make sure the working place meets the safety requirements.** Do not start work until you rectify the defects.

Safety specification during the work

1. Do only the work that is assigned by the supervisor

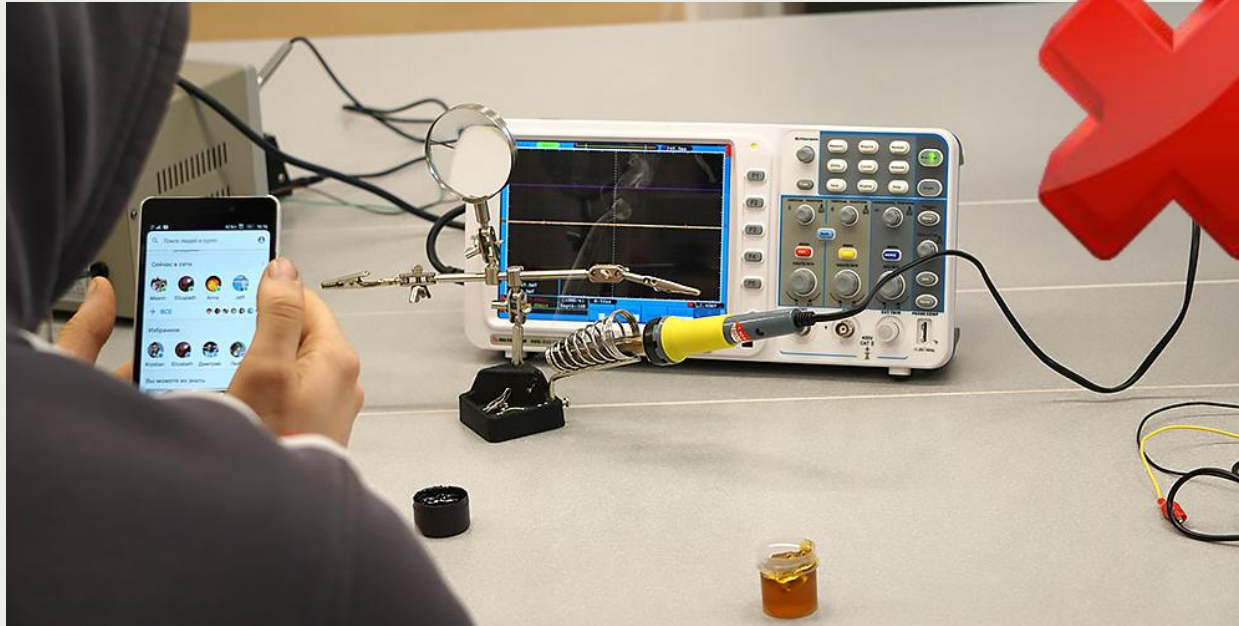


2. Do not allow mess at the working place



Safety specification during the work

To leave switched on devices unattended



Forbidden!

To eat in the workplace



Safety specifications in an emergency

- In case of malfunction
- In case of an accident
- In case of fire

Safety specifications in an emergency

In case of malfunction



You should signal about danger
*(Tell about it to all persons in
the room)*



Stop your work



Turn off the equipment
(if possible)



Report about the incident
to your supervisor

Safety specification in an emergency

In case of an accident



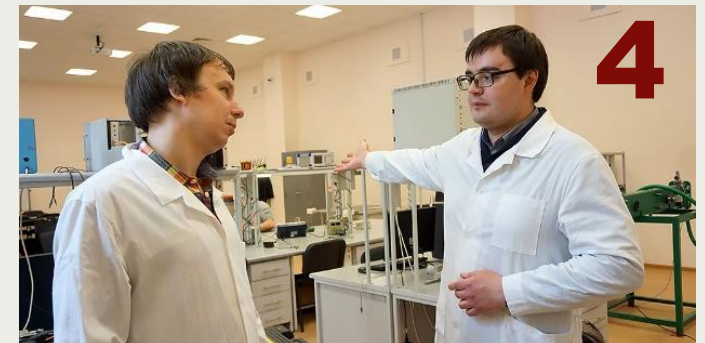
Separate the victim from the impacts of a hazard



Give first aid to the victim



Call ambulance to the place of accident by the phone 03, or by mobile phone 112



Report about the incident to your supervisor and keep the situation as it is (You can take a photo of the place of the accident)

Safety specification in an emergency

In case of fire



Assess the situation



Call fire brigade
to the place of fire



Report about the incident
to your supervisor
and save the situation
(You can take a photo
of the place of the accident)



Begin extinguishing with
available means
(extinguisher)

Safety specifications at the end of the work



Turn off the equipment



Tidy up the working place
and the equipment



Report about finishing your
work to your supervisor

SAFETY SIGNS

- Fire safety signs
- Prohibitory signs
- Warning signs
- Mandatory signs
- Guide signs

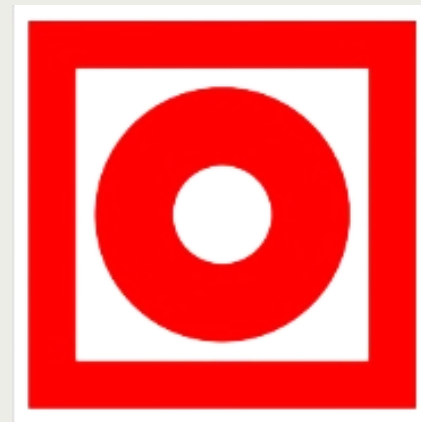
FIRE SAFETY SIGNS



Fire hydrant



Extinguisher



Button switching on the
automatic fire fighting
equipment



Exit,
Exit route

Warning signs, used at JINR



Danger.
Radioactive materials
or ionizing radiation



Danger.
Falling load hazard



Electrical shock hazard



Attention.
Danger
(other hazards)

Warning signs, used at JINR



Danger.
Laser radiation



Attention.
Possibility of high-altitude fall



Gas cylinder

Prohibitory signs, used at JINR



Don't smoke



Don't use the open flame



Pass is forbidden



No trespassing

Prohibitory signs, used at JINR



Working (presence) of people with
pace-makers is forbidden



No food



Don't use the elevator for lifting
(descending) of people.

Mandatory signs, used at JINR



Work wearing goggles



Work wearing a hard
hat (helmet)



Work wearing a respiratory
protection equipment



Work wearing
protective boots



Work wearing
protective gloves

Guide signs, used at JINR



Dining facility



Smoking area

Remember,
that YOU are the primary key player
in safety matters!