

SAFETY

REGULATIONS.

BASICS



JINR UC, 2019

CONTENTS

- Safety: general requirements
- Safety: before work
- Safety: during work
- Safety: emergency situations
- Safety: after work
- Safety signs

Safety: general requirements

Always follow:

- safety requirements of the work process
- safety rules of the equipment operation
- instructions of your supervisor



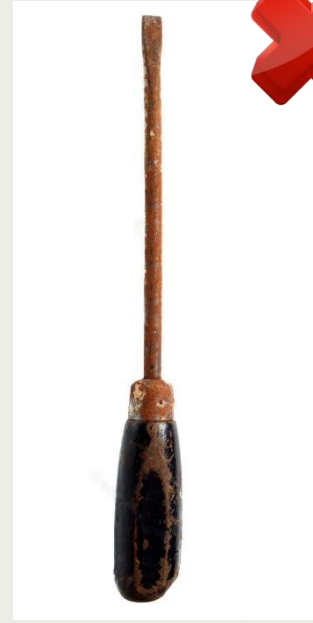
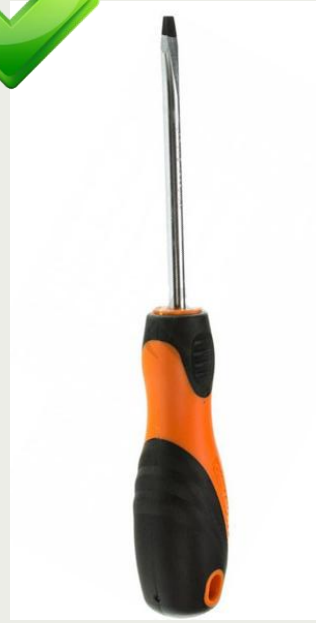
Safety: general requirements

Wear the uniform provided

(shoe covers, lab coat, protective cap)

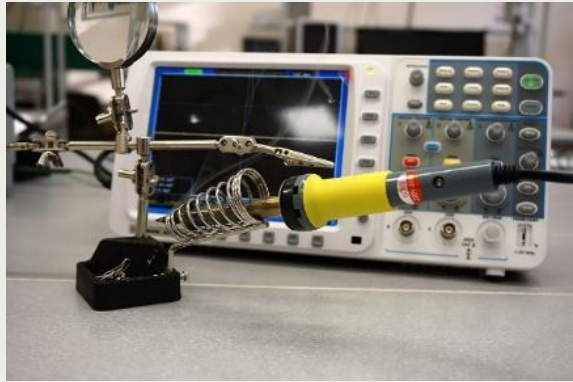


Work only with properly functioning defect-free tools



Safety: general requirements

**BE AWARE OF POSSIBLE SAFETY HAZARDS
at your workplace!**



Hot elements



Sharp corners and tools



Electricity



Ionizing radiation sources



Inflammable materials

Safety: before work



1. **Get a task** from your supervisor.
2. **Make sure that your workplace meets all safety requirements.** Do not start work until all hazards are eliminated.

Safety: during work

1. Do only the tasks assigned by the supervisor



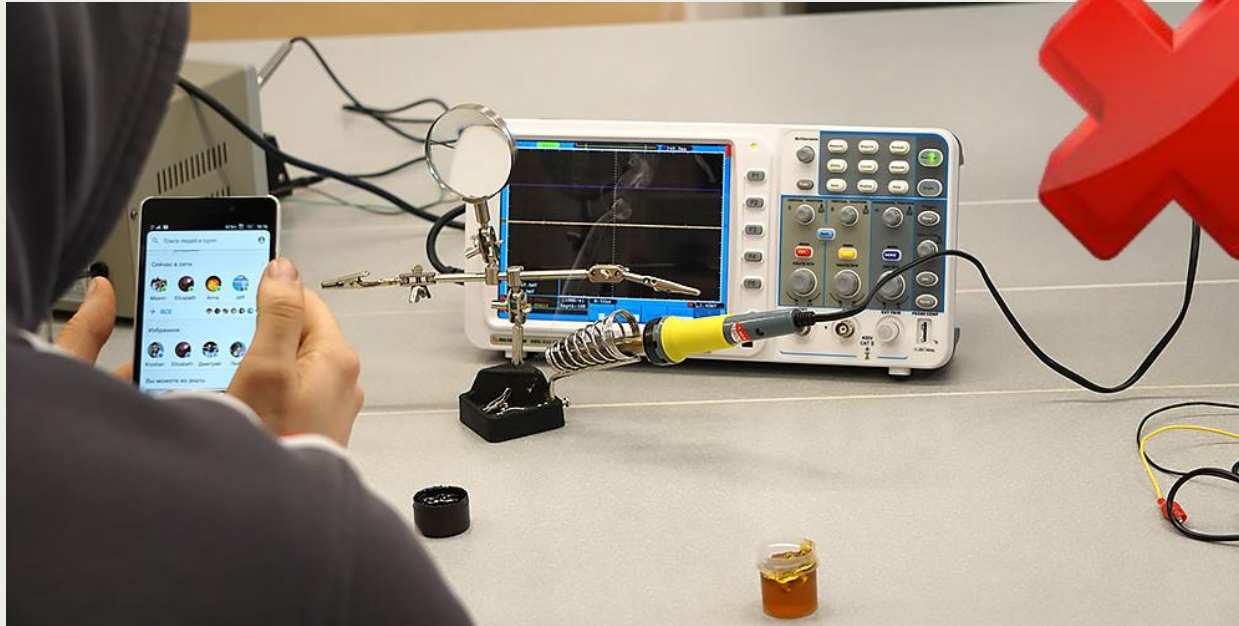
2. Keep your workplace free of clutter



Safety: during work

PROHIBITED!

to leave powered devices unattended



to have meals in the workplace



Safety: emergency situations

- **MALFUNCTION**
- **ACCIDENT**
- **SMOKE / FIRE**

Safety: emergency situations

In case of **MALFUNCTION**



Inform
all persons in the room
about the danger



Stop your work



Turn off the equipment
(if possible)



Report the danger
to your supervisor

Safety: emergency situations

In case of **ACCIDENT**



Assess the risks,
remove the victim from the hazard
without endangering your health



Provide first aid
to the victim



Ask a Russian-speaking
person to call
an ambulance
by dialing **03** (landline),
or **112** (mobile)



Report the accident
to your supervisor,
keep the scene of accident intact
(if possible, take a photo)

Safety: emergency situations

In case of **SMOKE**



Assess the situation
(and if it is a minor case...)



Inform
all persons in the room
about the danger



Begin extinguishing
with available means
(fire extinguisher)



Report the smoke to your supervisor,
keep the scene intact
(if possible, take a photo)

Safety: emergency situations

In case of **FIRE**



Assess the situation
(and if it is a major case...)



Ask a Russian-speaking
person to call
a fire brigade
by dialing **01** (landline),
or **112** (mobile)



Report the fire
to your supervisor
(if possible)



Evacuate
using the emergency
evacuation route

Safety: after work



Turn off the equipment



Arrange the workplace
and the equipment



Report the end of work
to your supervisor

SAFETY SIGNS

- Fire safety signs
- Prohibitory signs
- Warning signs
- Mandatory signs
- Guide signs

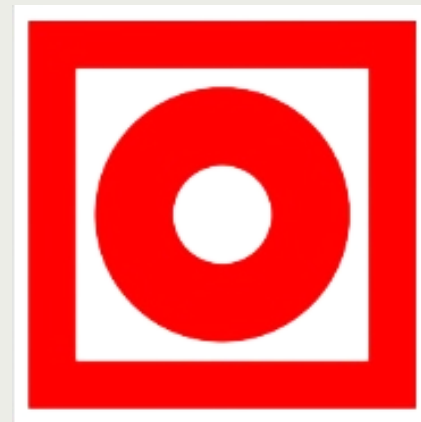
FIRE SAFETY SIGNS



Fire hose



Fire extinguisher



Fire alarm



Fire exit, exit

Warning signs used at JINR



Danger.
Radiation



Danger.
Overhead crane



Danger.
High voltage



Danger.
Safety hazard

Warning signs used at JINR



Danger.
Laser radiation



Danger.
Risk of falling



Danger.
Compressed gas

Prohibitory signs used at JINR



No smoking



Smoking and naked flames
forbidden



No entry



No access
for unauthorised persons

Prohibitory signs used at JINR



No pacemakers



No food/drink



No persons in the elevator

Mandatory signs used at JINR



SAFETY GOGGLES
must be worn



SAFETY HELMET
must be worn



RESPIRATORS
must be worn



SAFETY FOOTWEAR
must be worn



HAND PROTECTION
must be worn

Guide signs used at JINR



Eating and drinking area



Smoking area

Remember:
SAFETY STARTS WITH YOU !