

Open field behavior and habituation in rats irradiated

Severyukhin Yuri

Pristavka Elena

Parmon Pavel

CAUTION



RADIOACTIVE

The background features abstract, overlapping geometric shapes in various shades of green, ranging from light lime to dark forest green. These shapes are primarily located on the left and right sides of the frame, leaving a large white central area. The shapes are layered, creating a sense of depth and movement.

Why is it important?

Tests we've conducted:

- ▶ Morris water maze
- ▶ T-maze test
- ▶ Open field behavior test

Morris water maze

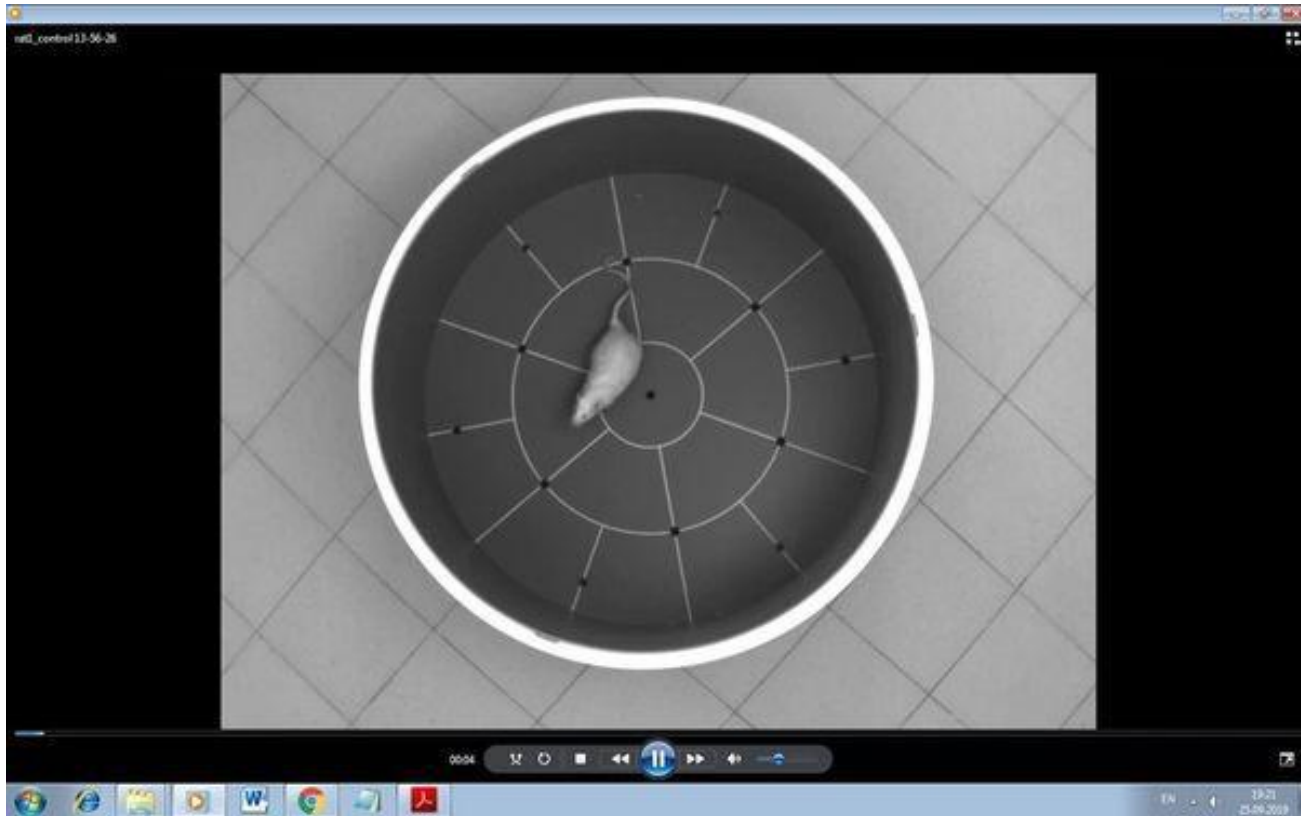
- ▶ A rat put in the water needs to find a platform where it's safe
- ▶ Shows work of short-term memory

T-maze



Generally, another test on short-term memory

Open-field behavior test



Shows researching instinct of tested object

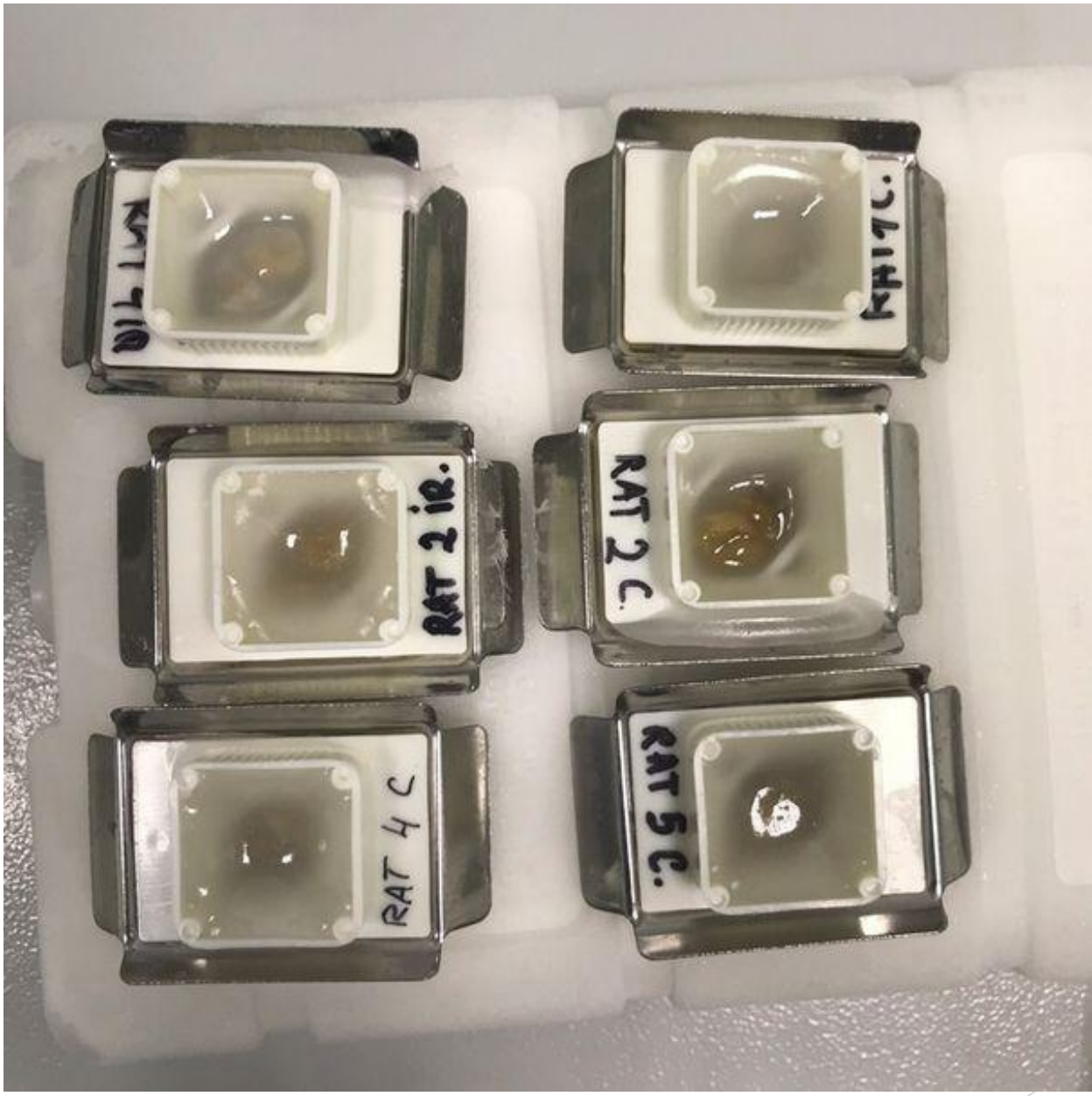


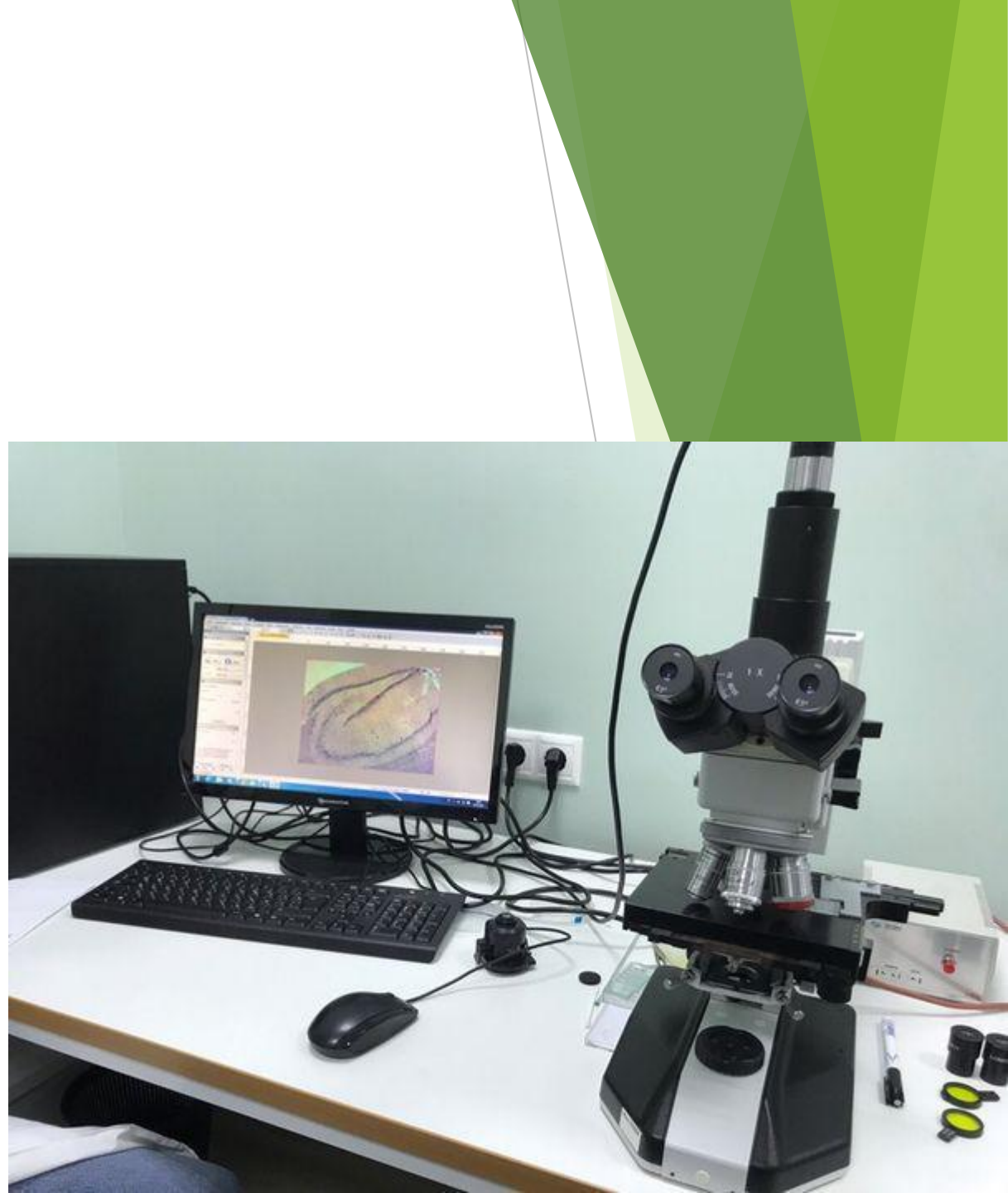
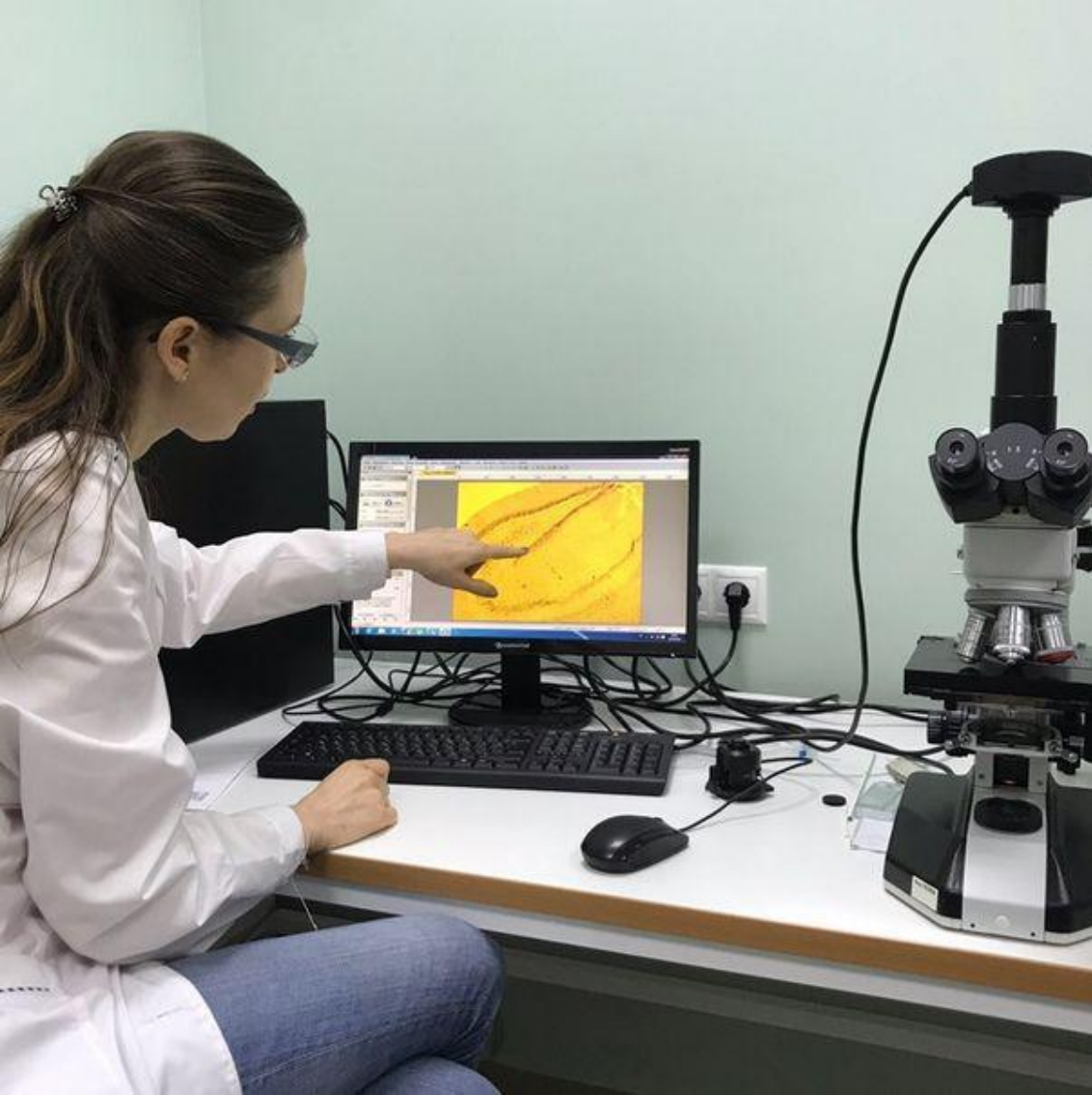
The background features abstract, overlapping geometric shapes in various shades of green, ranging from light lime to dark forest green. These shapes are primarily located on the left and right sides of the frame, creating a modern, layered effect. The central area is a plain white space where the text is located.

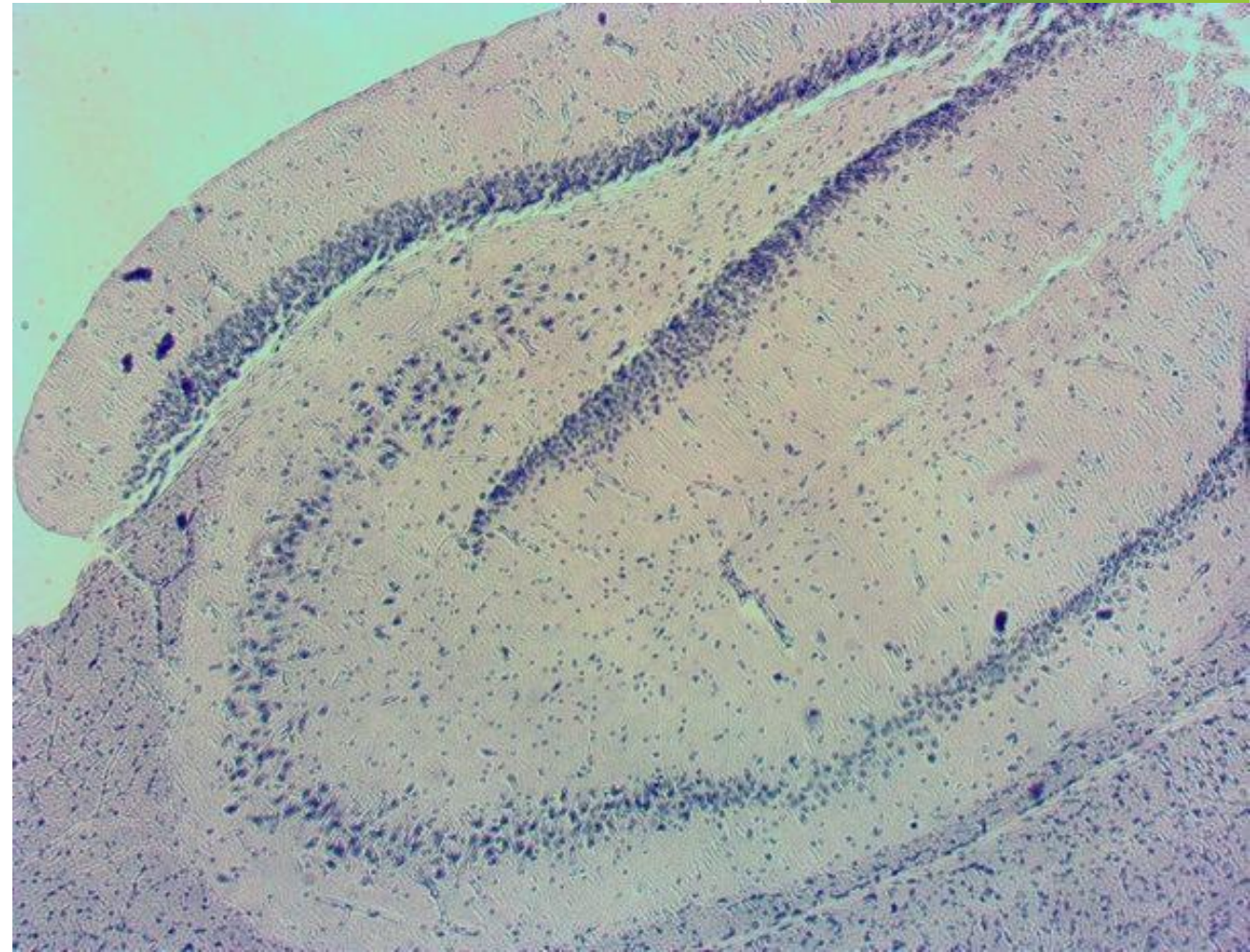
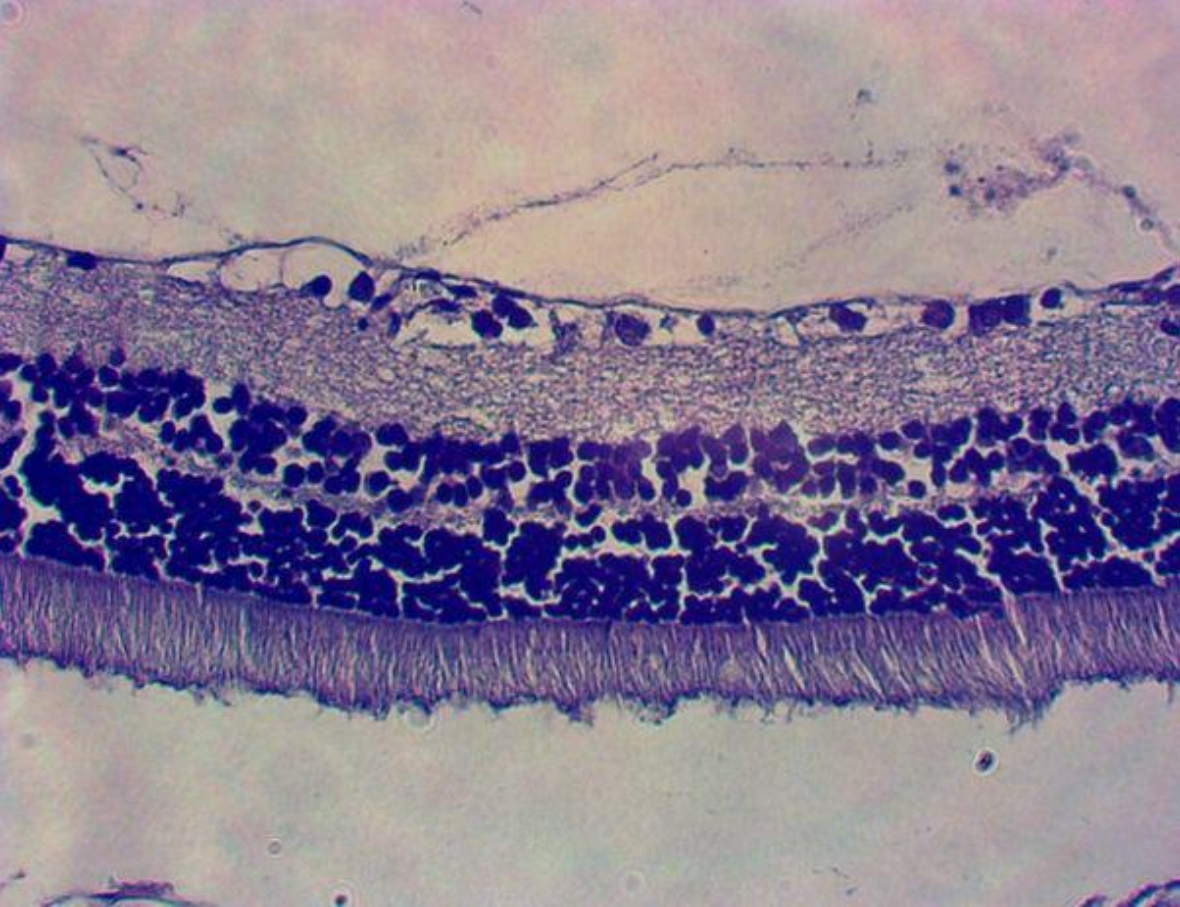
How we did it?











Thank You for attention!

Hope to see ya again 😊